



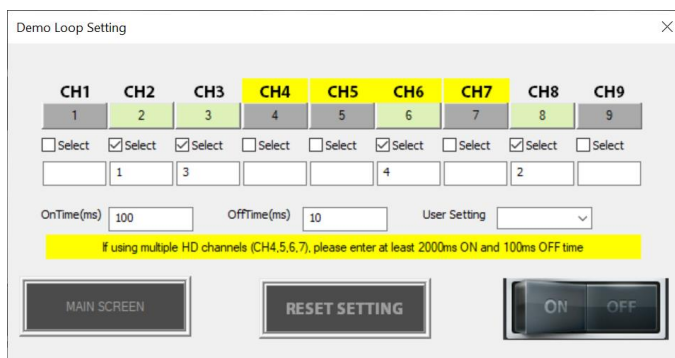
## Setting up a demo loop with the X-Cite® NOVEM

You will need to connect the NOVEM to a PC via USB, and ensure you have the NOVEM GUI which can be downloaded from the software tab of the [NOVEM webpage](#).

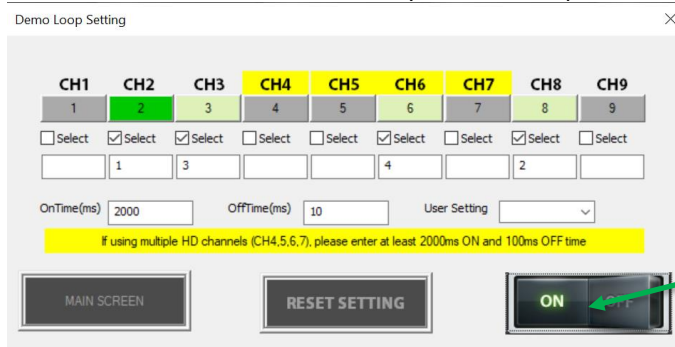
- 1) Power ON the X-Cite NOVEM
- 2) Open the X-Cite NOVEM control panel
- 3) Click on DEMOLOOP. The following window will open



- 4) Select the channels of interest by ticking the box next to 'Select', and specify the order in which you want the colors to appear/flash, along with the ON and OFF times.
  - a. For fastest flashing, choose only ONE of the 4 Channels in the Hybrid Drive (HD, highlighted in yellow).
  - b. If using MORE than 1 channel in the HD, please make sure the ON time is minimum 2sec (2000ms) and off time is at least 100ms to allow the filter wheel to move.



- 5) Once the parameters have been defined, click the ON button to start your demo loop.





## Saving and Recalling the Demo Loop

This demo loop may also be saved to a location of your preference (in case of multiple configurations)

Demo Loop Setting

CH1	CH2	CH3	CH4	CH5	CH6	CH7	CH8	CH9
1	2	3	4	5	6	7	8	9
<input type="checkbox"/> Select	<input checked="" type="checkbox"/> Select	<input checked="" type="checkbox"/> Select	<input type="checkbox"/> Select	<input type="checkbox"/> Select	<input checked="" type="checkbox"/> Select	<input type="checkbox"/> Select	<input checked="" type="checkbox"/> Select	<input type="checkbox"/> Select
	1	3			4		2	

OnTime(ms) 2000 OffTime(ms) 10 User Setting Save Read Save

If using multiple HD channels (CH4,5,6,7), please enter at least 2000ms ON and 10ms OFF time

MAIN SCREEN RESET SETTING ON OFF

Or saved as default on exiting the demo loop.

Demo Loop Setting

CH1	CH2	CH3	CH4	CH5	CH6	CH7	CH8	CH9
1	2	3	4	5	6	7	8	9
<input type="checkbox"/> Select	<input checked="" type="checkbox"/> Select	<input checked="" type="checkbox"/> Select	<input type="checkbox"/> Select	<input type="checkbox"/> Select	<input checked="" type="checkbox"/> Select	<input type="checkbox"/> Select	<input checked="" type="checkbox"/> Select	<input type="checkbox"/> Select
	1	3			4		2	

OnTime(ms) 2000 OffTime(ms) 10 User Setting Save Read Save

If using multiple HD channels (CH4,5,6,7), please enter at least 2000ms ON and 10ms OFF time

RETRUN TO MAIN SCREEN RESET SETTING ON OFF

Action

Do you want to save the current demo settings as default?

Yes No

To recall a saved demo loop, click on 'read' and point it to the saved location.

Demo Loop Setting

CH1	CH2	CH3	CH4	CH5	CH6	CH7	CH8	CH9
1	2	3	4	5	6	7	8	9
<input type="checkbox"/> Select	<input checked="" type="checkbox"/> Select	<input checked="" type="checkbox"/> Select	<input type="checkbox"/> Select	<input type="checkbox"/> Select	<input checked="" type="checkbox"/> Select	<input type="checkbox"/> Select	<input checked="" type="checkbox"/> Select	<input type="checkbox"/> Select
	1	3			4		2	

OnTime(ms) 2000 OffTime(ms) 10 User Setting Save Read Save

If using multiple HD channels (CH4,5,6,7), please enter at least 2000ms ON and 10ms OFF time

MAIN SCREEN RESET SETTING ON OFF

For more questions please contact your Excelitas account manager

[www.excelitas.com](http://www.excelitas.com)